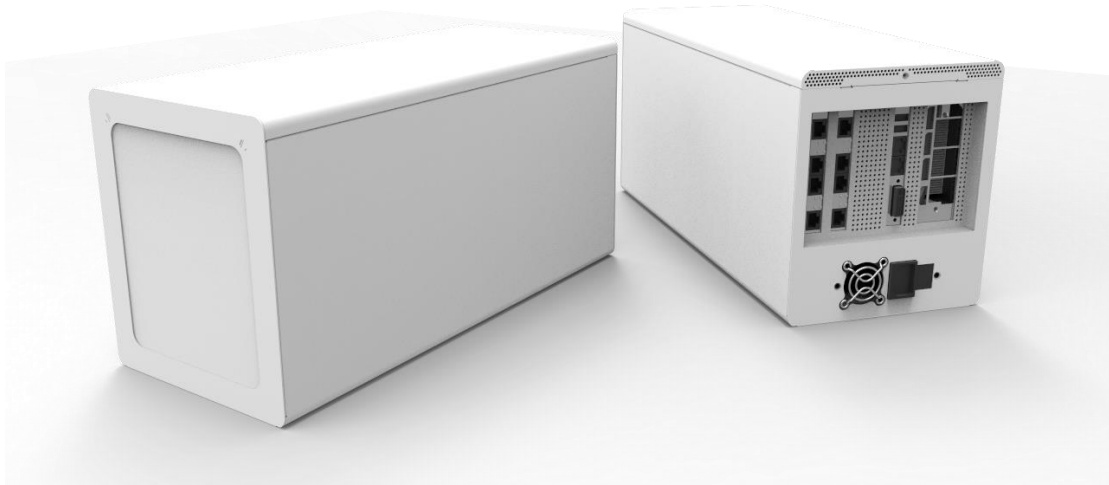


## AI Inference Engine

### Model name: MEDS-7061



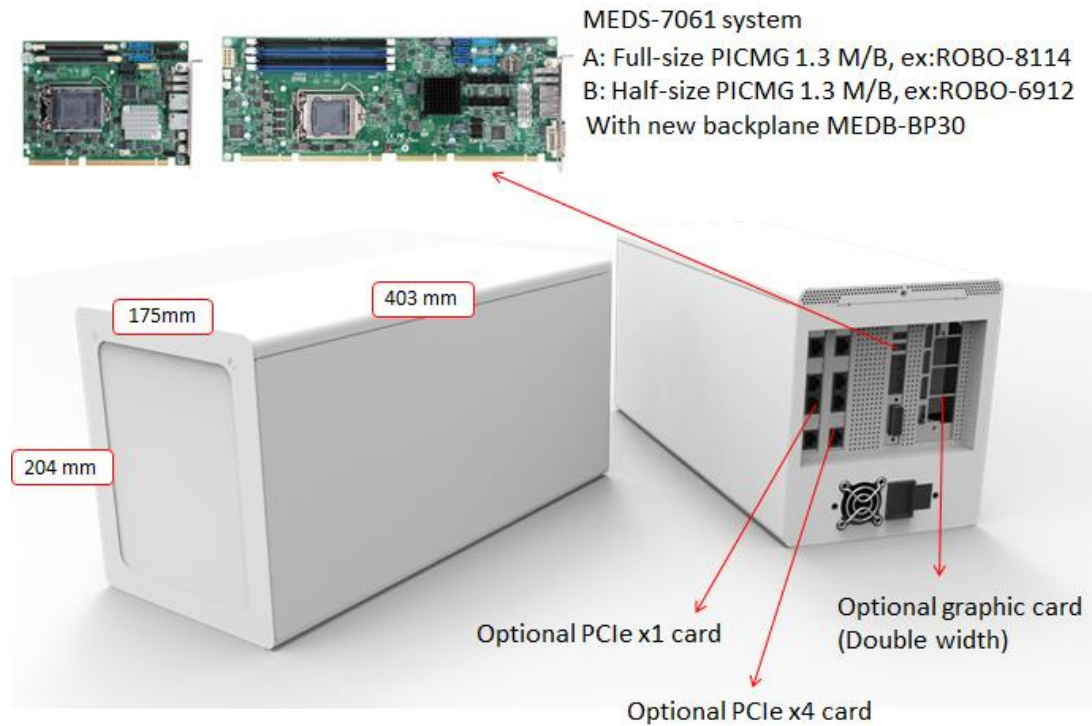
#### Feature:

1. Support Intel Gen 8<sup>th</sup> & 9<sup>th</sup> processor up to 65W
2. PCIe x16 slot supports for GPU or FPGA
3. 500W medical grade power supply
4. Simple chassis assembly design
5. Unique thermal solution

## System Spec:

System	
Processor	Socket LGA1151 for Intel Coffee lake CoreTM i7/i5/i3®, up to 65W
Chipset	Intel® Q370/ C246
Memory	2* DDR4 SO-DIMM 2400/ 2666 memory up to 64GB
Storage	1* mSATA 2* 2.5" SSD
H/W Status Monitor	Temperature (CPU & System) Voltage (CPU Vcore,12V,5V,3.3V)
Expansion Interface	1x PCIe x16 slot(PCle x16 Signal) 1x PCIe x4 slot or 1x PCIe x1 slot
I/O Interface	
Serial Port	N/A
USB	2* USB 3.0 ports
Audio	N/A
Ethernet	2* RJ-45 connector based on Gigabit Ethernet
Display	1* DVI-D up to 4096x2304 Or 2* mini-DP up to 4096x2304 (Depends on SBC mother board)
Power Supply	
Power Input	500W Flex ATX medical Power Supply
Mechanical & Environmental	
Operation Temperature	- 5°C ~ 40°C
Storage Temperature	- 40°C ~ 70°C
Dimension	175(W) x 403(D) x 204(H) mm
Cooler	1* 5500RPM CPU Cooler 1* 120*120mm System fan

## System configuration:



## Backplane:

