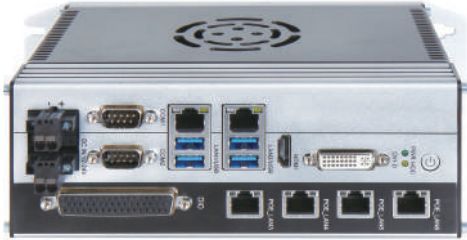


WEBS-89H2

Embedded Rugged System with
Intel® 10th Generation Core™ i3/i5/i7/i9 processor,
4x PoE LAN and 16x DI + 16x DO support



FEATURES

- Rugged platform to support wide operating temperature -20 ~ 60°C with Intel® 10th gen Core™ i3/i5/i7/i9 processor
- 2x 260-pin SODIMM DDR4-2400MHz up to 32GB
- 6x RJ45 GbE Ethernet ports including 4x PoE support
- 2x RS-232/485 selectable by switch
- 1x mSATA, 1x M.2 B Key 2280 and miniPCIe for Wi-Fi/4G options
- Support 16x DI and 16x DO

System

CPU	Intel® 10th gen Core™ i3/i5/i7/i9 processor (Formerly Comet Lake)
BIOS	AMI uEFI 64bit BIOS
Memory	2x 260-pin non-ECC DDR4 2400MT/s SO-DIMM up to 32GB
Storage	1x mSATA 1 x M.2 B Key 2280 (SATA)
Watchdog Timer	1~255 levels programmable Watchdog Timer
Expansion	1x Full-size miniPCIe slot with SIM card holder (USB signal)

External I/O

Serial Port	- 2x RS-232/485 port (selectable via switch)
Display	- 1x HDMI (3840x2160@60Hz) - 1x DVI (1920x1080@60Hz)
USB	- 4x USB 3.0 ports - 1x internal USB 2.0 Type A on-board
Ethernet	- 4x RJ45 PoE GbE connectors (Intel), max. 15w per channel - 2x RJ45 connectors (Intel)
DIDO	- 16x DI (support 2-channel A/B phase differential encoder input acquisition, max. 1MHz) - 16x DO (support 2-channel single-ended PWM output, max. 1MHz)

Power Supply Unit

Power Input	DC 12~24V input, max. 120W
-------------	----------------------------

Environmental

Operation Temperature	-20°C~60°C (-4°F~40°F)
Storage Temperature	-40°C~80°C (-40°F~176°F)
Relative Humidity	40°C, 95%RH non-condensing
Operation Vibration	1.5Grms/5-500Hz, IEC 60068-2-64
Operation Shock	20G, 11 msec, IEC 60068-2-27

Mechanical

Dimension	200 (W) x 154.5 (D) x 75.6 (H) mm
Weight	1.9 Kg
Mounting	Wall / DIN-rail mounting

Optional CPUs

Model	Cores/Threads	Frequency (Max)	Cache	TDP
Intel® Celeron® G5900TE	2C/4T	3.00GHz (3.00GHz)	2MB	35W
Intel® Core™ i3-10100TE	4C/8T	2.30GHz (3.60GHz)	6MB	35W
Intel® Core™ i5-10500TE	6C/12T	2.30GHz (3.70GHz)	12MB	35W
Intel® Core™ i7-10700TE	8C/16T	2.00GHz (4.40GHz)	16MB	35W
Intel® Core™ i9-10900TE	10C/20T	1.80GHz (4.50GHz)	20MB	35W



Portwell, Inc. Headquarters
No. 242, Bo'AI St., Shu-Lin Dist,
New Taipei City 238, Taiwan
Tel: +886-2-7731-8888
Fax: +886-2-7731-9888
E-mail: info@portwell.com.tw
www.portwell.com.tw

American Portwell
(Fremont, CA)
Tel: +1-510-403-3399
E-mail: info@portwell.com
www.portwell.com

Portwell UK Ltd.
(Osaka)
Tel: +44(0)1235-750-760
E-mail: info@portwell.eu
www.portwell.eu

Portwell Japan, Inc.
(Tokyo)
Tel: +81-3-6902-9225
E-mail: info@portwell.co.jp
www.portwell.co.jp

Portwell Japan, Inc.
(Osaka)
Tel: +81-6-4807-7721
E-mail: info@portwell.co.jp
www.portwell.co.jp

European Portwell
Tel: +31-252-620790
E-mail: info@portwell.eu
www.portwell.eu

KIOSK Embedded Systems GmbH
Tel: +49-8152-3962-500
E-mail: info@portwell.eu
www.portwell.de

Shanghai Portwell
Tel: +86-21-5771-2505
E-mail: info@portwell.com.cn
www.portwell.com.cn

Portwell Korea, Inc.
Tel: +82-31-450-3043
E-mail: info@portwell.co.kr
www.portwell.co.kr

Portwell India Technology Private Limited
Tel: +91-80-4168-4255
E-mail: enquiry@portwell.in
www.portwell.in