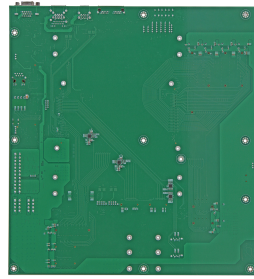
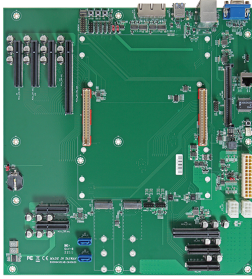


PCOM-C800

COM-HPC Evaluation Carrier Board for COM-HPC Server Module



FEATURES

- COM-HPC carrier board support COM-HPC server size D/E modules
- Extended ATX form factor provides extra expansion slots
- Supports USB 3.2 Gen2, USB 2.0, SATA, PCIe Gen4, PCIe Gen3, 2.5G RJ45, VGA
- Support industrial wide temperature range from -40°C to 85°C
- Standard ATX PSU input



The Portwell PCOM-C800 carrier board supports the COM-HPC server type module with Extended ATX form factor. This carrier board passed Portwell evaluation testing. It supports multiple I/O interfaces including PCIe 4.0, PCIe 3.0, 2.5GbE RJ45, USB 3.2, USB 2.0, SATA, COM, VGA from BMC, and -40~85°C industrial temperature range.

General

Product	PCOM-C800
Form Factor	Extended ATX (305mm x 330mm)
Supported Module	COM-HPC Server Type, Size D / E
General Function	RTC battery Postcode display BIOS SPI Socket Power BTN / Reset BTN RapidShutdown BTN

I/O Interface

SATA	2 x SATA III
USB	4x USB 3.2 Gen2 + 4x USB 2.0
Ethernet	1x 2.5GbE RJ45, 4x 10GBASE-KR, 4x 25G/10GBASE-KR
PCI Express	1x PCIe 4.0 x16 4x PCIe 4.0 x8 2x PCIe 4.0 x4 2x NVME PCIe 3.0 x4
Display	VGA
Legacy I/O	12x GPIO header
	2x I ² C header, support 1.8V & 3.3V
	1x eSPI header
	1x SMBUS header
Others	1x IPMB header
	1x RunBMC slot (DDR4 SO-DIMM type); 4x USB 2.0 ports via 2x headers; 2x RJ45 COM (connector on bracket)

MECHANICAL & ENVIRONMENT

Dimension	Extended ATX 305mm x 330mm
Power DC IN	ATX 24 pin ATX 8 pin
Storage Temperature	-40°C to 85°C
Operation Temperature	-40°C to 85°C
Certification	TBD
MTBF	TBD
Vibration	TBD

ORDERING GUIDE

Product	Ordering P/N	Status
PCOM-C800		In development
25G LAN card		Portwell proprietary
RunBMC module		

BLOCK DIAGRAM

PCOM-C800

COM-HPC Server
Carrier Board

Extended ATX
Form Factor

-40°C ~ +85°C

