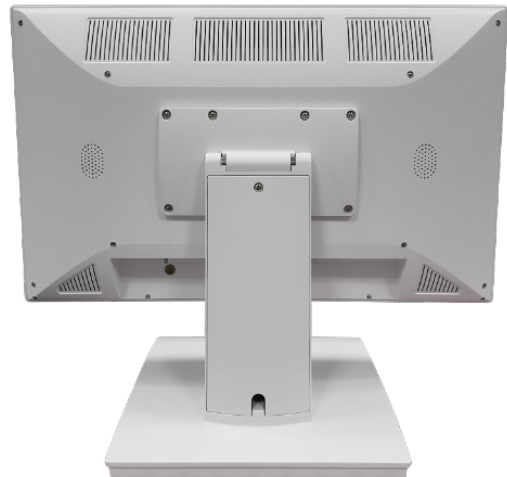


MEDS-M2380

23.8" True-flat design medical monitor

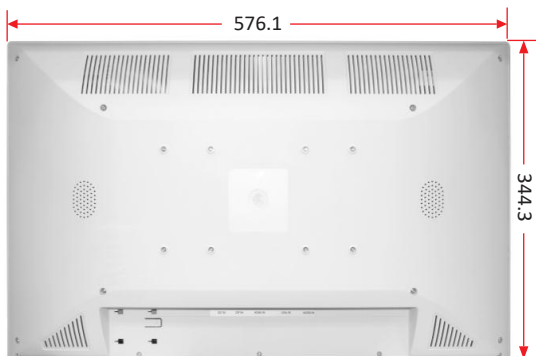


Portwell's 23.8" medical display is ideal for operator interface of medical equipment and healthcare service. Featuring a wide viewing angle, high contrast ratio and brightness, VESA mounting, DICOM, IPX1 rated. The medical grade display provides care givers with consistent, reliable, and high quality images.

Certified with EN 60601-1-2:2015 (4th Edition) EMC and safety, it can meet customers' requirements in a variety of applications.

FEATURES

- 23.8" medical touch display with full HD 1920 x 1080 resolution
- EN 60601-1-2 and FCC Part 18 certified
- Projective capacitive touch and true-flat display
- DVI, DP and HDMI input
- User-friendly OSD menu
- DDC2B Plug and Play
- Optional DICOM®
- Accessories: stand (optional)



Display

LCD Size	23.8"
Resolution	1920 x 1080 pixels
Brightness	400 nits
Contrast Ratio	1000 : 1
Backlight	LED type
Touch Screen	MVA Projective capacitive touch (USB interface)
Viewing Angle	178°(H) / 178°(V)
Color Support	16.7M colors (RGB – 8 bit)
Active Screen Area	527.04 x 296.46 mm
Support Resolution	640 x 480, 800 x 600, 1024 x 768, 1280 x 1024, 1366 x 768, 1680 x 1050, 1920 x 1080

I/O Interface

Serial Port	1x RS-232/422/485
Display	-1x DVI -1x HDMI 1.4 -1x Display Port 1.2
USB	USB Type B (touch)
Power Connector	DC Jack ($\phi = 2.5$ mm)
Audio	2x 2W (2.5 W / 8 Ω) speakers

Power

Power Supply	External power adapter, AC IN: 100 - 240V; DC OUT: 12V / 5A
Power Consumption	Max. 28.5 W

Mechanical & Environmental

Temperature Range	Operating : 5 - 40°C / Storage : -10 - 60°C
Humidity Range	Operating : 20 - 80% / Storage : 10 - 90%
Dimensions	Main body: 576.1 (W) x 447.4 (H) x 250 (D) mm Packaging: 645 (W) x 545 (H) x 295 (D) mm
Weight	Net Weight: 8.0 kg Gross Weight: 11.4 kg
VESA Mount	100 x 100 mm / 100 x 200 mm
Certifications	- EN 60601-1-2: 2015 (4 th Edition) - 47 CFR FCC Part 18 - IEC 60601-1-6:2010/AMD1:2013 - IEC 60601-1:2005/AMD1:2012 - RoHS, WEEE, REACH